

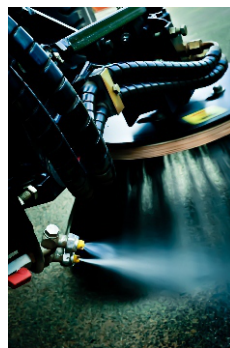
# ROOTS ROAD SWEEPER RSB 6000



## PRODUCTIVE - EFFICIENT



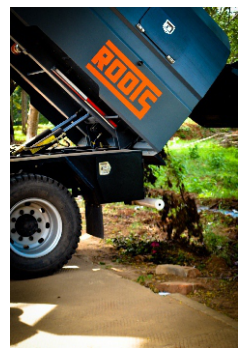
Large side broom with flexible head



Water Jet for  
Dust Suppression



Suction Ports



Hopper Dumping

# ROOTS ROAD SWEEPER

## RSB 6000

### OVERALL DIMENSIONS

Wheel Base	-	4,490mm
Overall Length	-	7,115 mm
Overall Width	-	2,332 mm
Overall Height	-	2,917 mm
Ground Clearance	-	258 mm
Turning Circle Radius	-	8,900 mm

### DEBRIS HOPPER

Capacity	-	6 Cubic Metres
Water Tank	-	500 Litres
Dumping Height	-	1100 mm
Dumping Tilt Angle	-	52°
Dumping	-	Hydraulic
Dumping Controls	-	In Cab
Inspection Doors	-	One on Each Side of Hopper
Construction	-	Stainless Steel
Warning	-	Overload

### SWEEPING EQUIPMENT

Side Broom	-	Φ 600 mm
Side Broom Type	-	Single Segment Steel Tined
Main Broom	-	Φ 400mm x 1200mm Length
Main Broom Type	-	Cylindrical PP Roller Broom

### Sweeping Width

#### with Standard 600 mm Dia Side Brush

Overall Sweeping width (with 2 Side Brushes)	-	3000 mm
with One side Brush	-	2200 mm
Broom Drive	-	Hydraulic Motor
Direction Change	-	Hydraulic Cylinder
Suction Nozzle Width	-	2 X 750mm
Suction Nozzle Type	-	Independent Suction Nozzle

### SWEEPER ENGINE

Manufacturer	-	Ashok Leyland
Model	-	ALHT4CTIC3
Induction System	-	Turbo
Combustion System	-	Direct Injection Diesel
Number of cylinders	-	4
Power Rating	-	101 HP @ 2200 rpm
Cooling System	-	Liquid Cooled
Starter	-	12 Volts, 4.8 Kw
Alternator	-	12 Volts, 50 Amp
Battery	-	12 Volts, 100 Ah
Oil Filter	-	Spin-on
Air Cleaner	-	Dry Type
Safety Shutdown	-	Automatic

### HYDRAULIC SYSTEM

Type	-	Gear Pump
Fluid Capacity	-	70 Litres
Drive	-	Direct Drive
Filter	-	10 Micron Spin-on
Strainer	-	80 Mesh

### CAB & CHASSIS

Engine	4 Cylinder, 4 stroke diesel engine
Bore x Stroke mm	100 x 120 mm
Displacement (CC)	3770 cc
Power Output	145 Hp @ 2,400 rpm
Torque	490Nm @ 1,400-1,600 rpm
Fuel Tank Capacity (ltrs)	190L
Emission	EuroIII/BSIII standard : Bs3
Clutch	Dry Type hydraulic operated
Gear Box	6 +1 speed synchromesh type
No of Propeller Shaft	2
Rear Axle	Fully floating hypoid gear reduction
Rear Axle Capacity	10,200 Kgs
Front Axle	Heavy Duty reverse elliot type
Front Axle Capacity	5500 Kgs
Frame	Bolted and Riveted
Steering	Power Steering
Wheels & Tires	2 Nos in front, 4 nos in rear and 1 no spare
Tyre Size	9.00 x 20 -16 PR
Brakes	Service: Full Air dual line S Cam type
	Parking Brake: Air operated
Electrical System	12V Negative Earth
	100 Ah (20 hr rating)
Weight (GVW)	15,700 Kgs
Performance	95 Kmph

### "All hydraulic system and control available in driver cabin"

### Performance

Sweeping Capacity	25,000 m <sup>2</sup> /h
Suction Hose	Heavy Duty, flexible hose, Φ 200mm, 3m
Blower Air Flow	11,800 m <sup>3</sup> /h
Impeller	Abrasion resistance, HARDOX Steel
Fan Speed	Independent of vehicle speed
Sweeper Engine	4 cylinder, turbo charged diesel engine of 101 Hp min with air cleaner, variable RPM control, temperature control, shut off

Discharge	Hydraulically operated tipping/dumping 50degrees at the rear.
-----------	---------------------------------------------------------------

Water sprinkle and dust suppression system	Pressurised sprinkle system through nozzle at 0.5 bar
--------------------------------------------	-------------------------------------------------------

Safety System	a) Back up alarm b) LED warning light at the rear of the cab and the body c) Fluorescent marker across and around the truck d) paint weather resistant
---------------	-----------------------------------------------------------------------------------------------------------------------------------------------------------------

### CAB

All steel full forward control drivers cab with safety glass and factory built tillable arrangement including all accessories

Roots reserves the right to make any changes considered necessary for the purposes of improvement at any time or for any reason without prior notice, in line with its policy of continuous product development and progress.

**Our Product Range** - Sweepers, Scrubber-Driers, Vacuum Cleaners, Single Disc Scrubbers, Mini Floor Washers, High Pressure Water Jet Cleaners, City Sweepers, Bins, Mops & Trolleys.

MKT/07/2020



**Roots Multiclean Ltd.**

R.K.G Industrial Estate Ganapathy, Coimbatore - 641 004 India.

Tel : +91 422 4330 33 Email: rmclsales@rootsemail.com

Website: rootsmulticlean.com

**Toll Free: 1800-419-9779**